



PANTONE®

A Guide to Installing and Using Pantone
Connect in Adobe Creative Cloud



Contents

Preface.....	3
Section 1: Create an Account at Pantone.....	4
Section 2: Pantone Connect Console.....	6
Section 3: Install the Adobe Pantone Connect Plug-In.....	11
Addendum	16

Preface

Adobe and Pantone part ways

In 2022, Pantone decided to phase out some of the color books from Adobe products such as Photoshop, InDesign and Illustrator. Their reason, the color books were not maintained properly in the Adobe Apps. Those looking at Adobe's online documentation about color swatches found an alert that warned of the impending changes to Adobe Photoshop, Illustrator, InDesign, Acrobat, Adobe Color, and Adobe Capture. Then in March 2023, a message states: the color definitions "will be removed from future software updates. To minimize the impact of this change, we are working on an alternative solution for the affected products. Stay tuned for updates."

For the artist and print shops, this left them in a bind. Creatives, who understandably want to continue using the industry-standard color system, are expected to pay a subscription for a Pantone license via the Adobe Pantone Connect plug-in.

What's the cost?

To start off, You can create an account and start choosing colors at Pantone but cannot add the Pantone colors to your palette in your Adobe apps. Here are the plans:

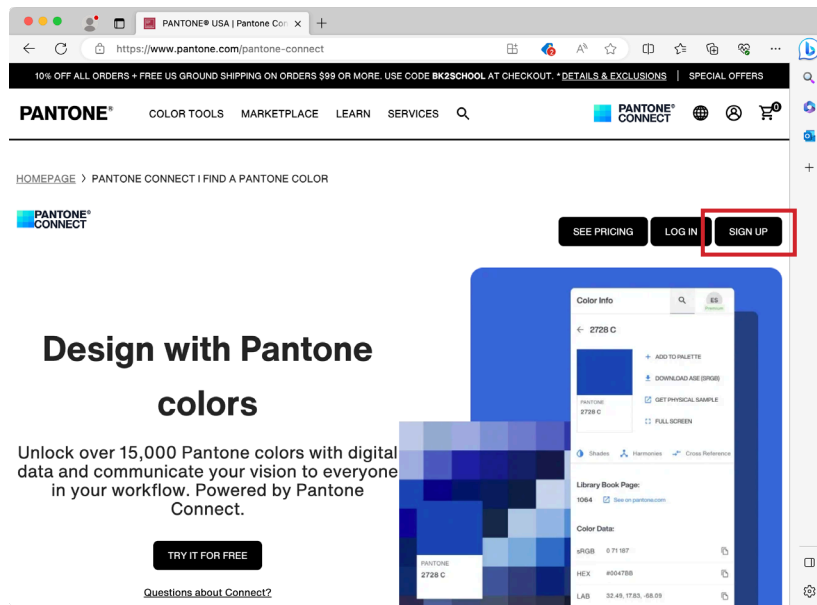
Basic	Premium Monthly	Premium Annual
Free	\$14.99 per year	89.99 per year
<ul style="list-style-type: none">• Search• Pick from any 15,000 Colors• See Pantone Color Reference Number• Measure*• Up to 10 Palettes• Unlimited Share to users	<ul style="list-style-type: none">• Search• Pick from any 15,000 Colors• See Pantone Color Reference Number• Measure*• Unlimited Palettes• Unlimited Share to users• Add to Adobe Swatches• Extract*• Color Story• Analyze Color• Convert*• Shades*• Cross Reference• Harmonies*• Unlimited CMYK, Hex, RGB, L*a*b and Formula data	<ul style="list-style-type: none">• Same as Premium Monthly but 50% off when paid annually• Discounted further for multi-seats. Minimum is 10 seats.• For multi-seats with SSO, there is a \$3000 set up fee

*Please see the Addendum for more information on these features.

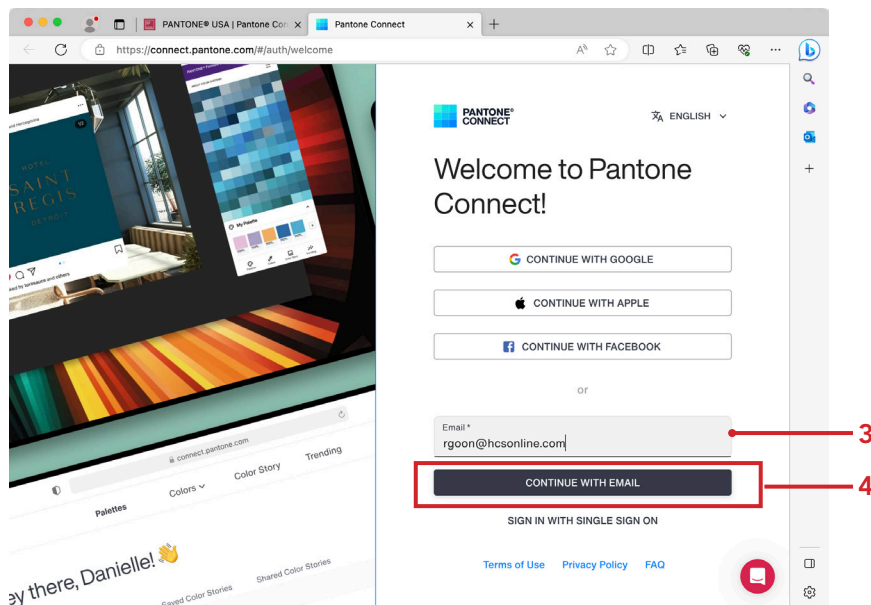


Section 1: Create an Account at Pantone

1. In a web browser, go to:
<https://connect.pantone.com>
2. Click Sign Up.

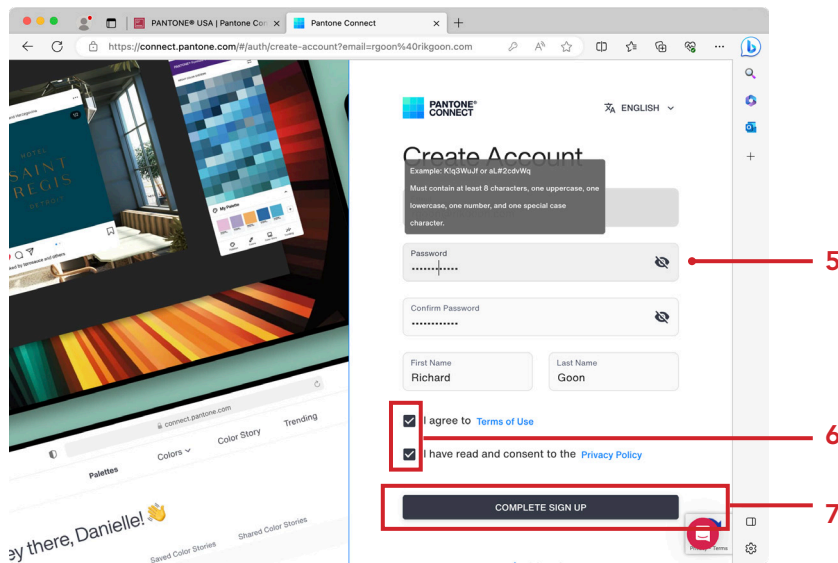


3. Enter your email address.
4. Click Continue With Email

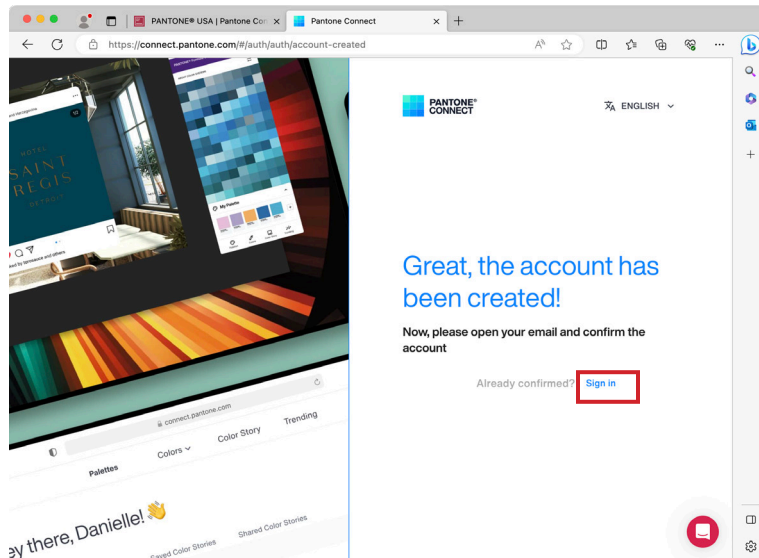




5. Enter your information
6. Select the checkboxes for the Terms of Use and Privacy Policy.
7. Click Complete Sign Up.



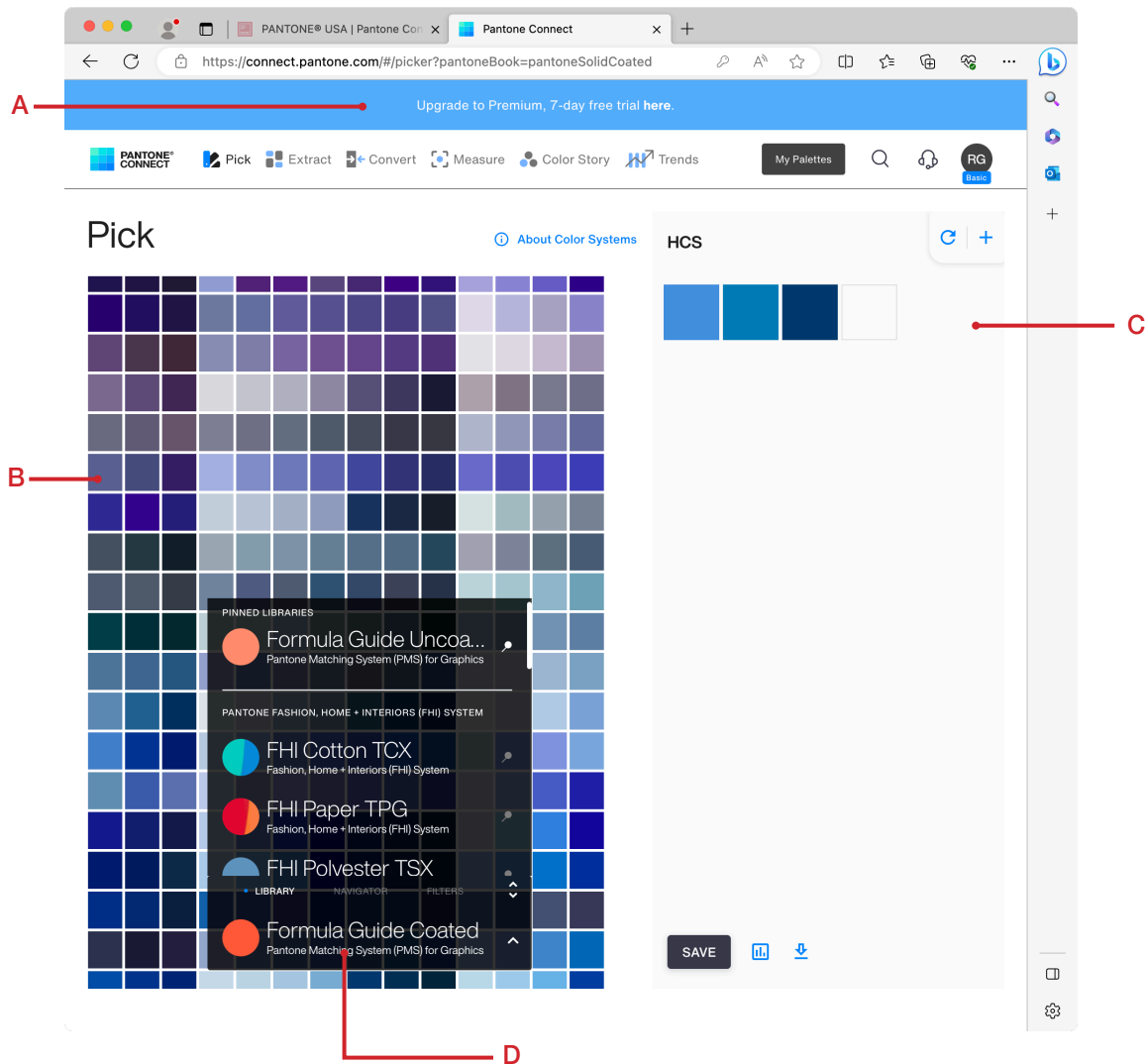
8. Click Sign in.





Section 2: Pantone Connect Console

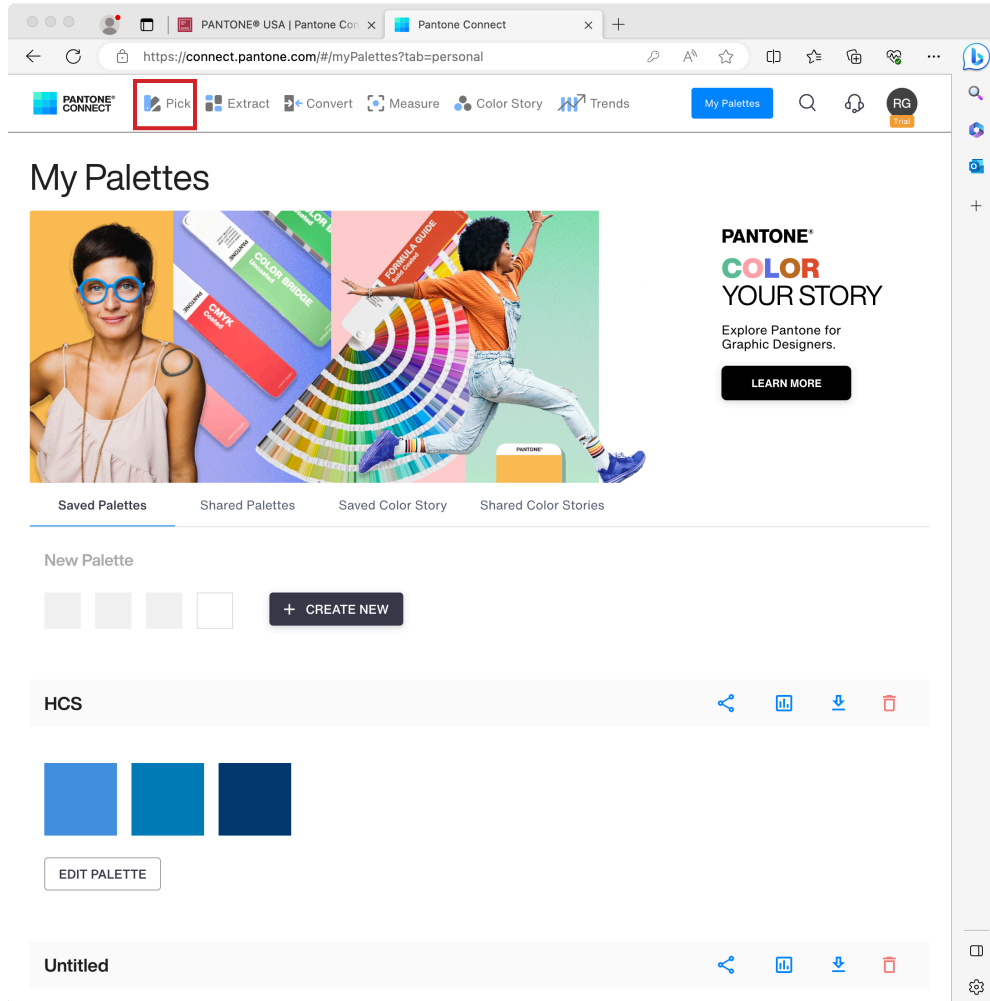
1. When you sign into the console, you will see the color book on the left-hand side and custom palettes on the right side.



- A. **Subscription Type** This shows you which subscription you have.
- B. **Color swatches** Hover your pointer over a swatch to view the name. Click on a swatch to get details about it.
- C. **Custom Palettes** Add swatches to a custom palette. Click Add (+) to create more palettes.
- D. **Color Book Menu** Choose and Select the many different types of Pantone color books offered to you. Click the pin next to a Favorite book to bring it to the top.



2. After you have subscribed to a paid version, the console changes to a start page with your custom palettes and video tutorials. Click Pick to bring you back to the color books.

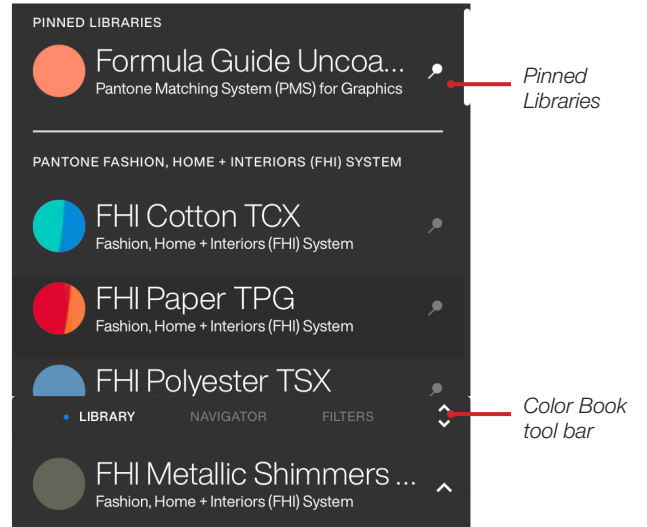




Color Book Menu

1. The Color Book menu is broken down into three sections and in each section contains the different color books.

- Pantone Fashion, Home + Interiors (FHI) System
 - FHI Cotton TCX
 - FHI Paper TPG
 - FHI Polyester TSX
 - FHI Nylon Brights TH
 - FHI Metallic Shimmers
- Pantone Matching System (PMS) for Graphics
 - Formula Guide Coated
 - Formula Guide Uncoated
 - Color Bridge Coated
 - Color Bridge Uncoated
 - Extended Gamut Coated
 - Pastels and Neons Coated
 - Pastels and Neons Uncoated
 - Metallic Coated
- Other Pantone Libraries
 - CMYK Coated
 - CMYK Uncoated
 - Skin Tone Guide



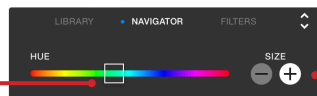
2. In the Color Book tool bar, click Navigator. Use the slide to navigate to a color close to your desired hue.

Pick

[About Color Systems](#)



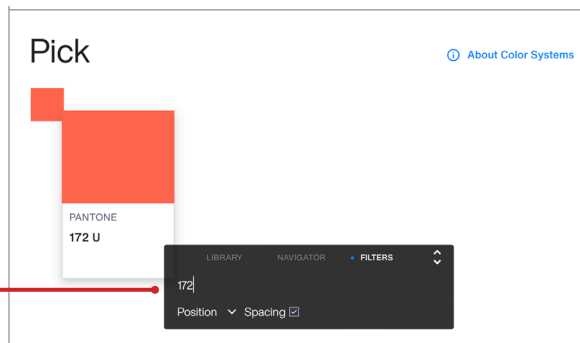
Use the slide to navigate to a desired hue and see the results above



Increase/Decrease size of swatches

3. Click filters and use them to search for a specific Pantone color.

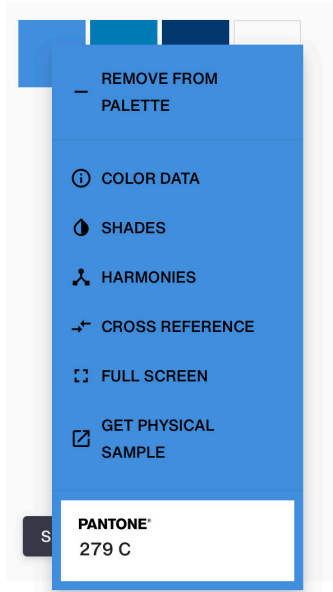
Enter a code or name of the swatch






Swatches


1. When you click on a swatch from the color book or your palette, you will see different options for the color.




- **Color Data** Shows you the details of the color such as how to mix the color, what page it's on in the physical color book and how to match different color space (sRGB, HEX LAB.)
- **Shades** Gives you choices to pick a shade of the swatch based on Hue, Saturation or Lightness.
- **Harmonies** Gives you choices to pick another Pantone color that will work with the color. For example, a complimentary color for PMS 279 C would be PMS 7413 C.
- **Cross Reference** Use this to match alternative colors in different Pantone color books.
- **Full Screen** Presents the color in full screen with information about the color.





← 279 C

 + ADD TO PALETTE

 GET PHYSICAL SAMPLE




 FULL SCREEN

PANTONE 279 C

 Color Data  Shades  Harmonies  Cross Reference

Library Book Page: 155 [See on pantone.com](#)

Color Data:

sRGB	65 143 222	
HEX	#418FDE	
LAB	56.88, -4.57, -48.89	

Formula

PANTONE Process Blue	16.8%
PANTONE Violet v2	7.84%
PANTONE HD Extender	75.36%

Color Data Window



Palettes

Palettes allows you to grab swatches from the color book to form a group for you to share or save for later use. A basic subscription allows you to have 10 palettes while a paid subscription gives unlimited palettes. To add a color to a palette, you can drag and drop a swatch from a color book to the palette.

Name of the palette → HCS

→ Create a new palette

→ Clears the selected palettes of color

→ Removes the color from the palette

→ Tool options for the color

→ After adding colors to the palette, click Save

→ Shares the selected palette to another person

→ Downloads a PNG file of the palette

REMOVE FROM PALETTE

COLOR DATA

SHADES

HARMONIES

CROSS REFERENCE

FULL SCREEN

GET PHYSICAL SAMPLE

PANTONE® 654 C

SAVE

Share Palette

Collaborator's email

Add per person

Owner:

rgoon@hconline.com

Colors list

Hue distribution

Luminance map

Colorblind simulation

Original
No Color Defect

Deuteranomaly
of 12.1% (0.02%)

Protanomaly
of 1.1% (0.02%)

Protanopia
of 1.3% (0.02%)

Select a Template

Details and uses of the palette.



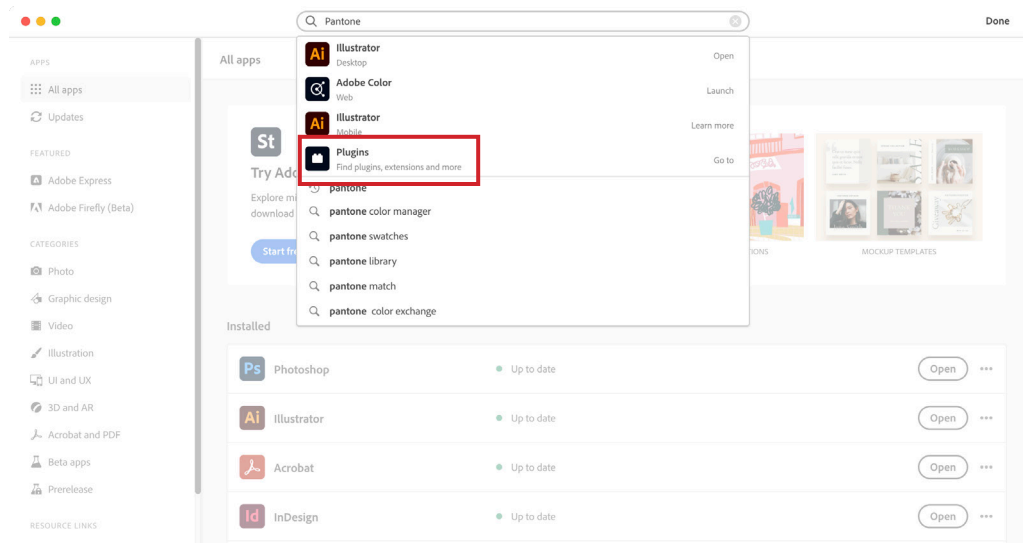
Section 3: Install the Adobe Pantone Connect Plug-In

1. In the Finder, open Adobe Creative Cloud console from the menu.



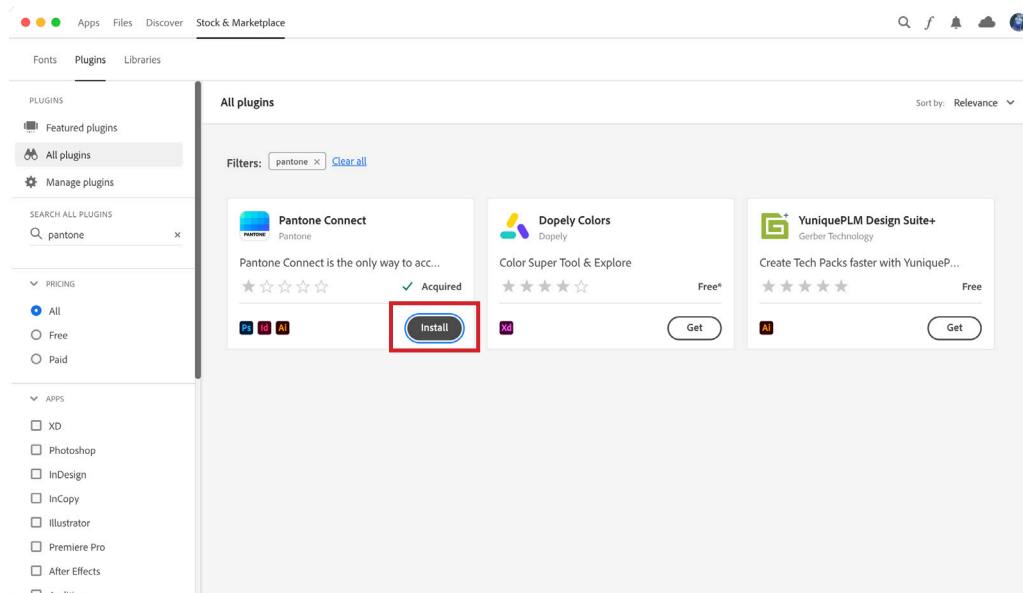
2. In the search field, enter Pantone.

3. Select Plugins.



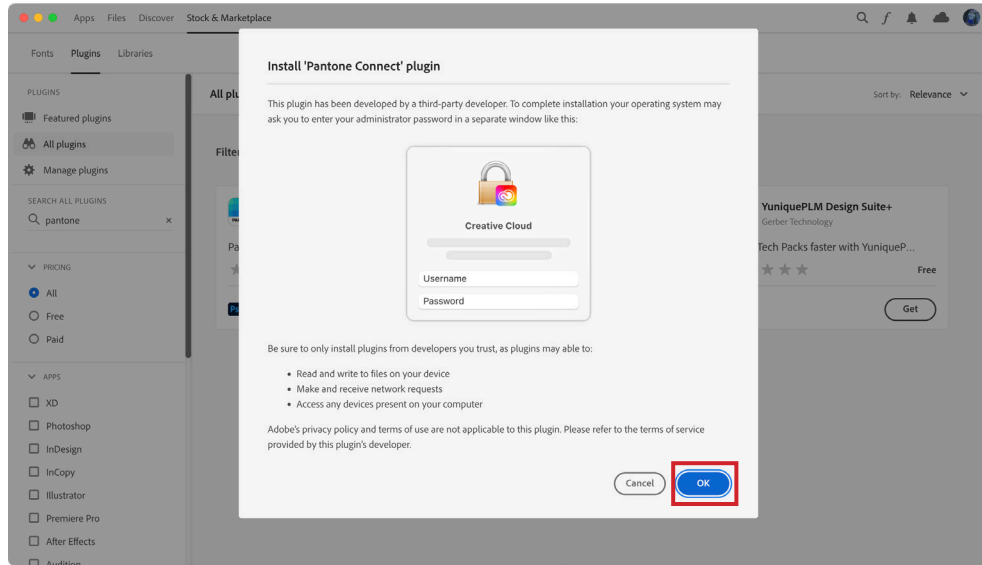
4. Click Install for Pantone Connect.

NOTE: You will have to close Photoshop, Illustrator and InDesign before installing.



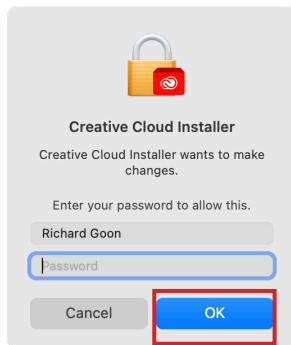


5. Click OK.

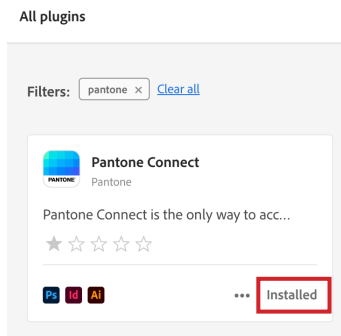


6. Enter your admin credentials.

7. Click OK.



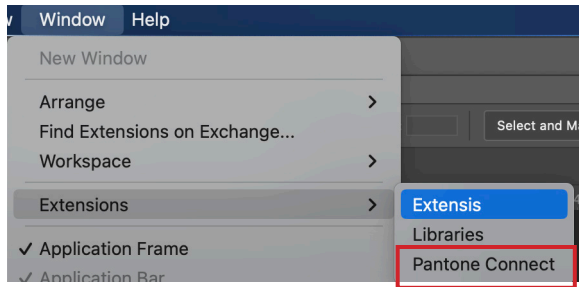
8. Confirm Pantone Connect is installed.



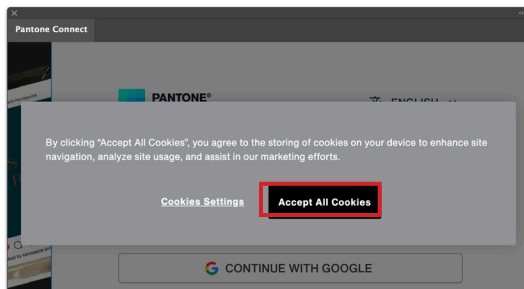


9. To access Pantone Connect from InDesign, Illustrator or Photoshop, Click Window > Extensions and select Pantone Connect.

NOTE: Please see the Addendum about Photoshop running under Apple Silicon.

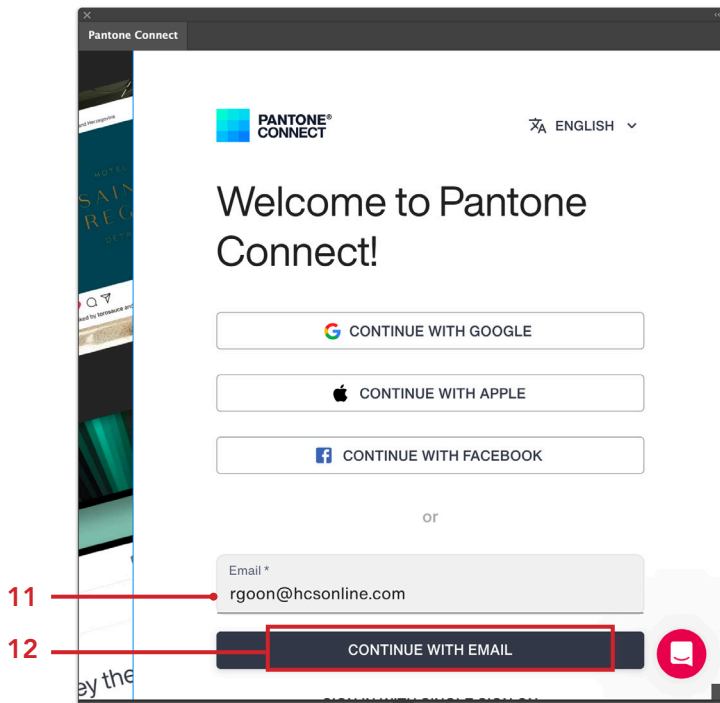


10. Click Accept All Cookies.



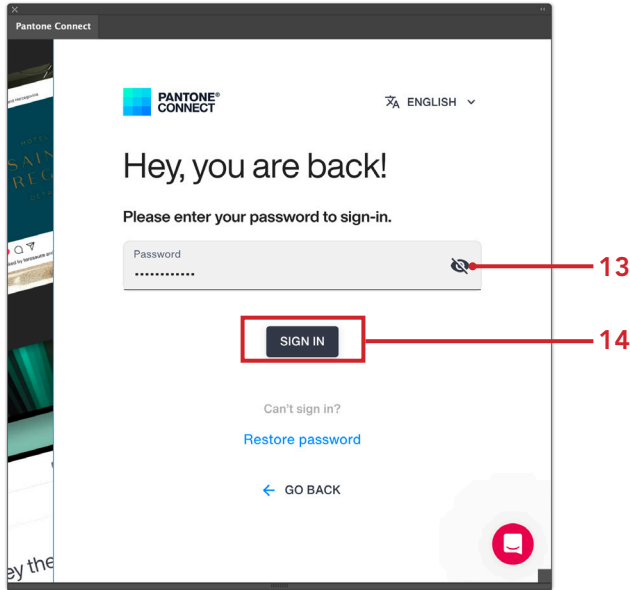
11. Enter the email address you used to create the account in Section 1.

12. Click Continue With Email.

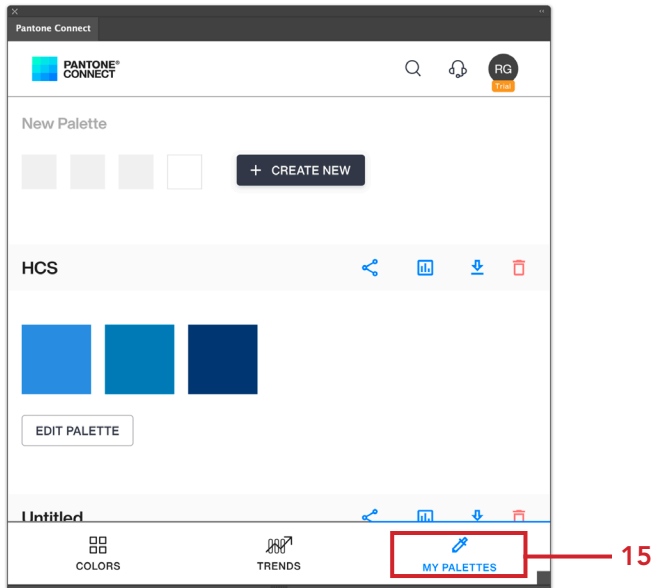




13. Enter the password for the account.
14. Click Sign In.

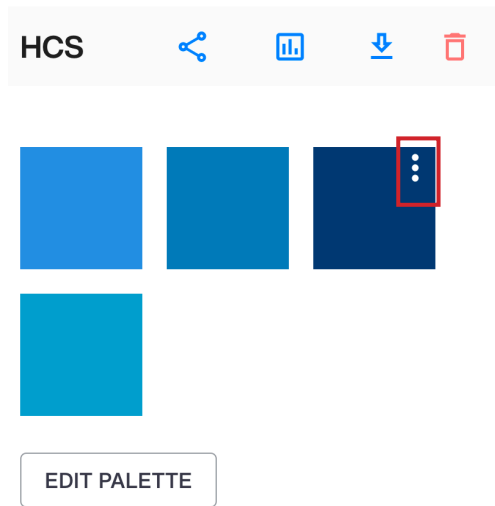


15. Click Palettes.
16. Scroll down and you can see the palette from Section 2.

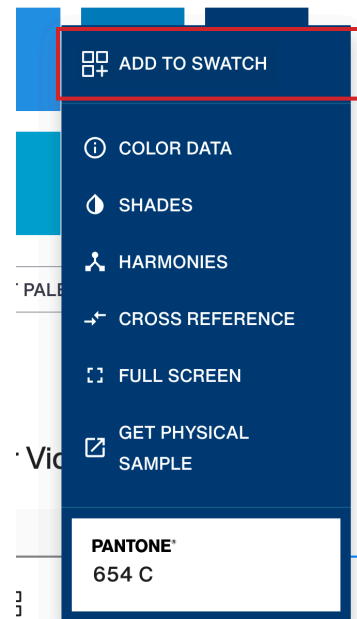




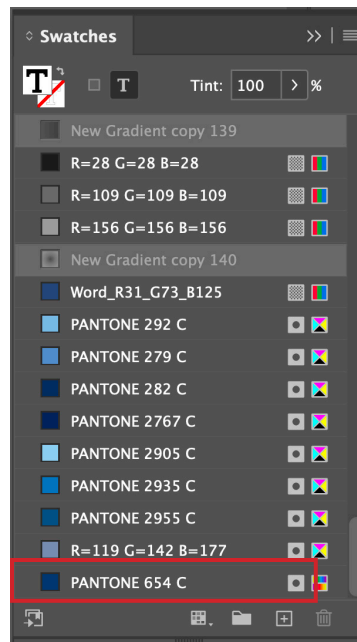
17. To add a color to one of the Adobe apps (InDesign, Illustrator or Photoshop), hover the pointer on a color and click Options (⋮).



18. Select Add To Swatch.



19. Confirm the color has been added to Swatches in the Adobe App.





Addendum

Features

Measure Use the Pantone Color Match Card with Pantone Connect Mobile App to capture color inspiration in the real world, wherever you find it.

Convert Find the nearest RGB/CMYK/Hex/L*a*b* color equivalents to Pantone colors or convert between Pantone colors in different libraries.

Extract Isolate colors in digital files and find their nearest Pantone color matches.

Color Story NEW mood board function lets you use 1, 3, or 5 images to create a color collage and isolate relevant colors to create your own original color story.

Color Harmonies and Color Shades Build smarter palettes leveraging Pantone's powerful color psychology and theory tools to find ideal pairings for your preferred colors.

Troubleshooting

If you are having problems installing from the Adobe Creative Cloud Console, you can use Anastasiy's Extension Manager to install the plug-in. Download the app from:

<https://install.anastasiy.com/>

You can download the Pantone Connect plug-in from here:

<https://pantone-connect-resources.s3.eu-west-1.amazonaws.com/Pantone-Connect-prod-V1.0.7.zip>

Photoshop on Apple Silicon Macs

When you are running Photoshop on an Apple Silicon Mac, the plugin will not load. You will have to run Photoshop using Rosetta. To do this:

1. Go your Applications folder and open the Photoshop folder.
2. Select the Photoshop app (do not open it).
3. Go to File > Get Info.
4. Select the checkbox for Open using Rosetta.
5. Launch Photoshop.
6. Go to Window > Extensions (legacy).
7. Select Pantone Connect

